

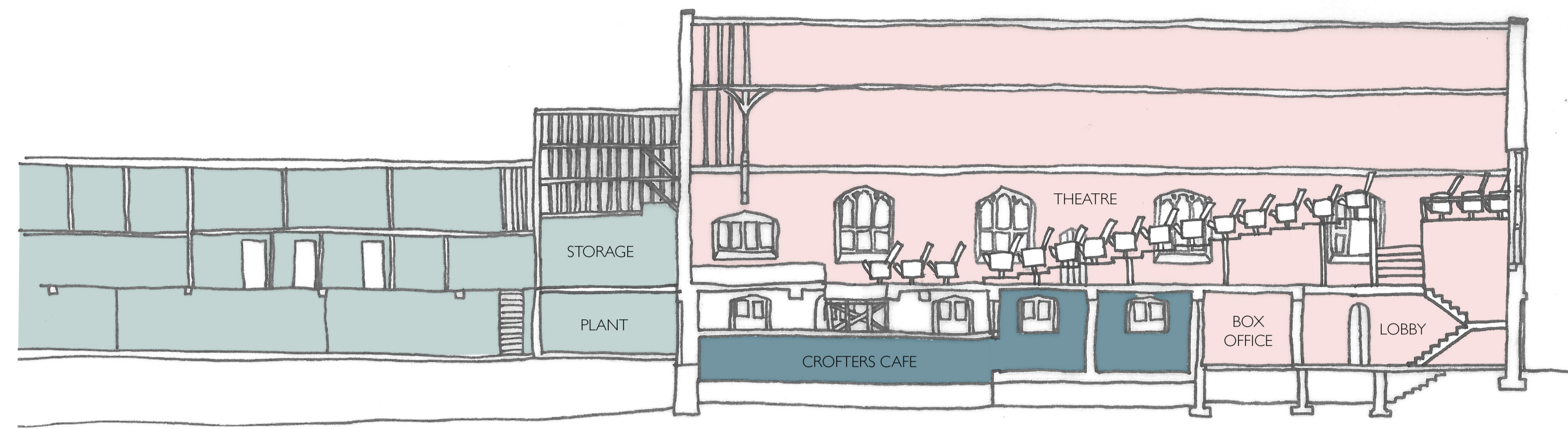
Option 1 aims to maintain an optimum number of seats for 'theatre' style performances, whilst increasing flexibility of use by creating an area of flat flooring for other activities and functions. This requires temporary staging and an element of loose flat seating to be introduced, as well as retaining an area of fixed seating.

The current King Street access and Box Office/Reception arrangement is retained. A new platform lift and stair is provided adjacent to the Red Barn and a new glazed link provides covered access to the Fermoy Gallery.

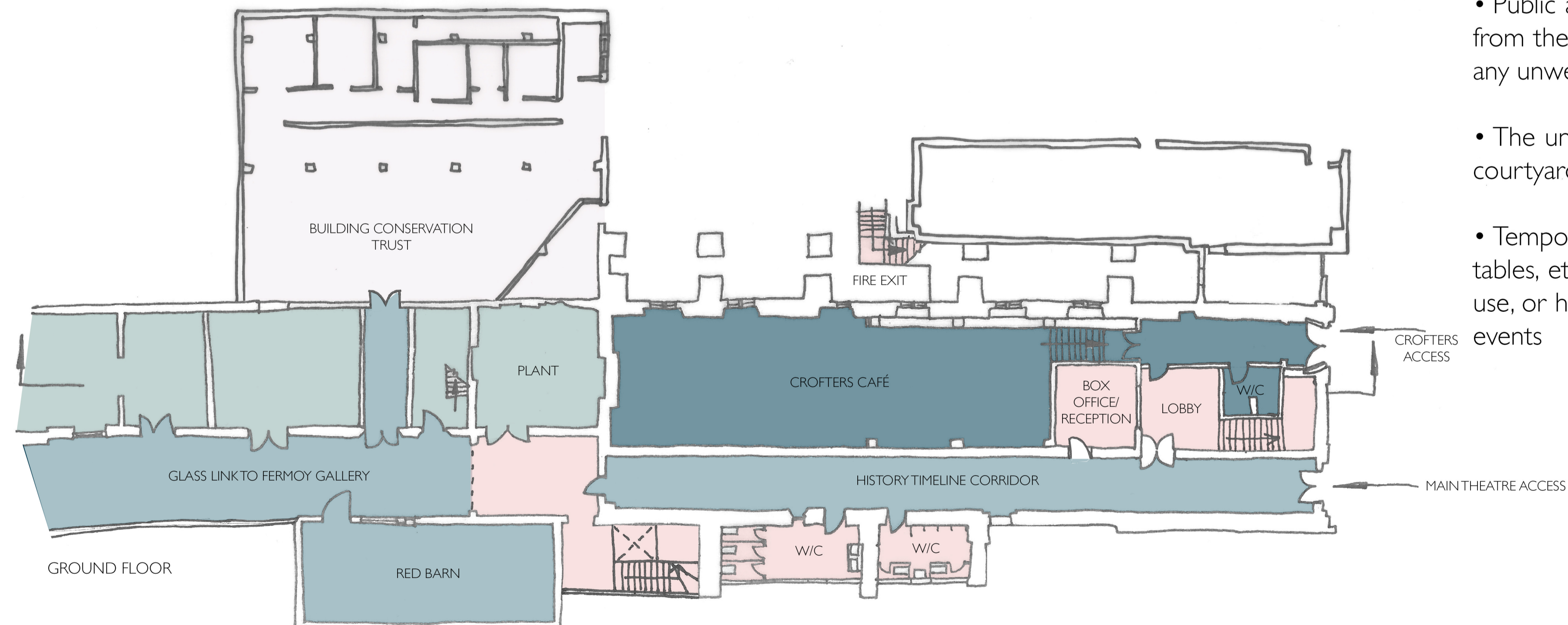
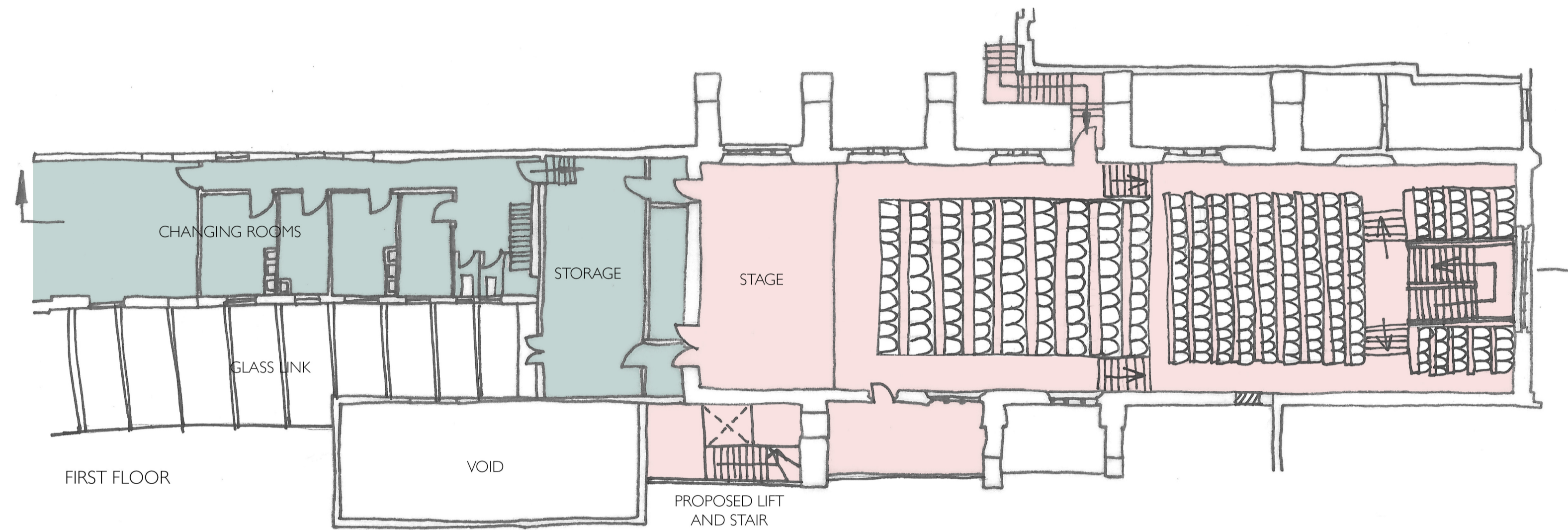
The corridor becomes an interpretation space describing the development of the Guildhall from its first construction to the present day.

The Red Barn becomes a flexible space for a bar, performance, exhibition or community uses.

The undercroft restaurant has a dedicated entrance from King Street and washroom facilities.



SECTION A-A



- BUILDING CONSERVATION TRUST
- THEATRE SPACES
- PUBLIC SPACES
- STAFF SPACES
- CROFTERS CAFE

PROS

- 250 seats can be provided for performances
- Approximately half the floor area of the Guildhall becomes flat enabling it to be used for other activities
- The Guildhall is made accessible for wheelchair and other users
- The Guildhall is provided with a permanent interpretation space

CONS

- There is no opportunity to reveal the Guildhall in its original form, and the theatre form is truncated
- The fixed seating reduces the area available for other uses and therefore restricts the type of use
- Those using the accessible route to the first floor are separated from those using the main entrance to the first floor
- Public access and the reception is remote from the Red Barn and Fermoy Gallery and any unwelcome activity is unobserved
- The unattractive metal escape stair at the courtyard entrance is retained
- Temporary staging, loose seating and tables, etc., need to be stored when not in use, or hired, with associated setting out for events